

# Dutch ProCKD Training

Leiden, 2022



Co-funded by the Erasmus+ Programme of the European Union

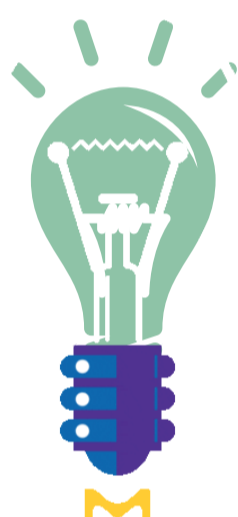


## Capacity Building

ProCKD training will support the capacity building of the stakeholders thus helping the development of the necessary patient competences. Activities will be an opportunity to develop a community of further support for the professional integration of patients and for their caregivers' education.

## Aim: Enhancing Potential & Keeping your Job

The training activities in the Netherlands will aim at enhancing on the one hand the potential of the unemployed patients for employability and professional reintegration and on the other hand the capability of the working patients to keep their jobs



## Added Value: Content

The added value of offering training (learning) activity is two folded: (1) it supports the capacity building of the stakeholders involved, and in particular development of competence needed in providing support and mentoring patients with Chronic Kidney Disease for their involvement in work, employability and entrepreneurship;

(2) In addition the learning activity will be a space to develop a community of practice of those who will be using the project outputs and further support the integration of patients with Chronic Kidney Disease and their family.



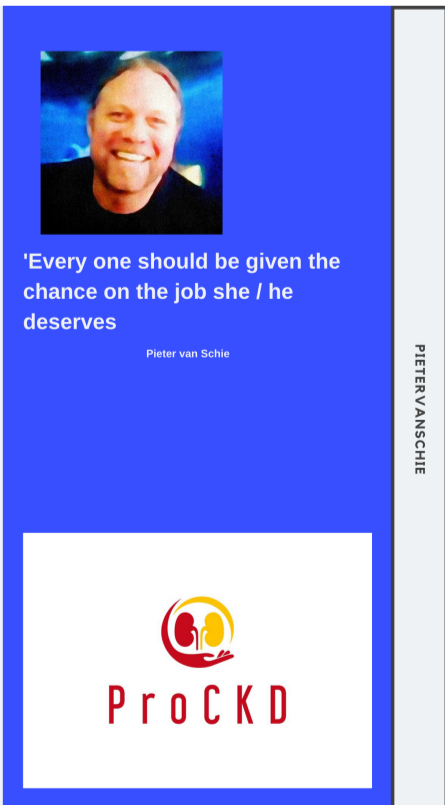
## Dutch ProCKD Training Days: 2022

The Dutch Employment, Employability and Entrepreneurship Study Days will be for the duration of 3 days and held at the entrepreneurial hub Area071 in Leiderdorp, nearby city of Leiden, close to Schiphol Airport/Amsterdam.



### Brand I

'8 out of 10 employers check the social media of their future employees'



## Dutch Training Days Framework

- \* Dutch Employability and Entrepreneurship Perspective
- \* Work is Treatment and Treatment is Work
- \* From Dream to Idea to starting up a Business
- \* Study Visits

Dutch ProCKD Training Days

2022



Co-funded by the Erasmus+ Programme of the European Union